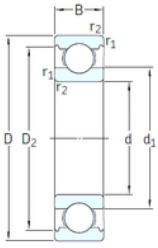




# GBMA Bearing Manufacturing Co.,Ltd



VA201



2Z/VA201



2Z/VA208



2Z/VA228

## 6220-2Z/VA208 SKF High Temperature Insert Bearings

Bearing No. 6220-2Z/VA208

6220-2Z/VA208 Bearing 2D drawings and 3D CAD models

Size	100x180x34 mm
Bore Diameter	100 mm
Outer Diameter	180 mm
Width	34 mm
d	100 mm
D	180 mm
B	34 mm
C	34 mm
d1	124 mm
r1 min.	2,1 mm
r2 min.	2,1 mm
D2	160 mm
Weight	3,15 Kg
Temperature -	150 to +350 °
Basic static load rating (C0)	93 kN
Category	Single Row Ball Bearings
Inventory	0.0
Manufacturer Name	SKF
Minimum Buy Quantity	N/A
Weight / Kilogram	0
Product Group	B00308
Enclosure	2 Metal Shields
Precision Class	ABEC 1   ISO P0
Maximum Capacity / Filling Slot	No
Rolling Element	Ball Bearing



## GBMA Bearing Manufacturing Co.,Ltd

Snap Ring	No
Internal Special Features	Segmented Cage
Cage Material	Graphite
Internal Clearance	C0-Medium
Inch - Metric	Metric
Long Description	100MM Bore; 180MM Outside Diameter; 34MM Outer Race Width; 2 Metal Shields; Ball Bearing; ABEC 1   ISO P0; No Filling Slot; No Snap Ring; Segmented Cage Internal Special Features; C0-Medium Internal C
Other Features	Deep Groove   Extreme Temperature Variant
Category	Single Row Ball Bearing
UNSPSC	31171504
Harmonized Tariff Code	8482.10.50.68
Noun	Bearing
Keyword String	Ball
Manufacturer URL	<a href="http://www.skf.com">http://www.skf.com</a>
Weight / LBS	3.3
Outer Race Width	1.339 Inch   34 Millimeter
Outside Diameter	7.087 Inch   180 Millimeter
Bore	3.937 Inch   100 Millimeter
Inner Race Width	0 Inch   0 Millimeter
$d_1$	124.8 mm
$D_2$	159.9 mm
$r_{1,2}$ min.	2.1 mm
$d_a$ min.	112 mm
$d_a$ max.	124 mm
$D_a$ max.	168 mm
$r_a$ max.	2 mm
Basic dynamic load rating C	127 kN



## GBMA Bearing Manufacturing Co.,Ltd

Basic static load rating $C_0$	93 kN
Limiting speed	30 r/min
Limiting temperature T max.	350 ° C
Mass bearing	3.27 kg