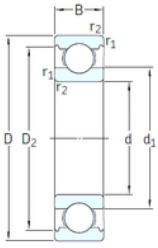




GBMA Bearing Manufacturing Co.,Ltd



VA201



2Z/VA201



2Z/VA208



2Z/VA228

6316-2Z/VA208 SKF High Temperature Insert Bearings

Bearing No. 6316-2Z/VA208

6316-2Z/VA208 Bearing 2D drawings and 3D CAD models

Size	80x170x39 mm
Bore Diameter	80 mm
Outer Diameter	170 mm
Width	39 mm
d	80 mm
D	170 mm
B	39 mm
C	39 mm
d1	108 mm
r1 min.	2,1 mm
r2 min.	2,1 mm
D2	147 mm
Weight	3,65 Kg
Temperature -	150 to +350 °
Basic static load rating (C0)	86,5 kN
Category	Single Row Ball Bearings
Inventory	0.0
Manufacturer Name	SKF
Minimum Buy Quantity	N/A
Weight / Kilogram	3.682
Product Group	B00308
Enclosure	2 Metal Shields
Precision Class	ABEC 1 ISO P0
Maximum Capacity / Filling Slot	No
Rolling Element	Ball Bearing



GBMA Bearing Manufacturing Co.,Ltd

Snap Ring	No
Internal Special Features	Segmented Cage
Cage Material	Graphite
Internal Clearance	C0-Medium
Inch - Metric	Metric
Long Description	80MM Bore; 170MM Outside Diameter; 39MM Outer Race Width; 2 Metal Shields; Ball Bearing; ABEC 1 ISO P0; No Filling Slot; No Snap Ring; Segmented Cage Internal Special Features; C0-Medium Internal CI
Other Features	Deep Groove Extreme Temperature Variant
Category	Single Row Ball Bearing
UNSPSC	31171504
Harmonized Tariff Code	8482.10.50.68
Noun	Bearing
Keyword String	Ball
Manufacturer URL	http://www.skf.com
Weight / LBS	3.75
Outer Race Width	1.535 Inch 39 Millimeter
Inner Race Width	0 Inch 0 Millimeter
Bore	3.15 Inch 80 Millimeter
Outside Diameter	6.693 Inch 170 Millimeter
d_1	108 mm
D_2	146.9 mm
$r_{1,2}$ min.	2.1 mm
d_a min.	92 mm
d_a max.	107.9 mm
D_a max.	158 mm
r_a max.	2 mm
Basic dynamic load rating C	130 kN



GBMA Bearing Manufacturing Co.,Ltd

Basic static load rating C_0	86.5 kN
Limiting speed	30 r/min
Limiting temperature T max.	350 ° C
Mass bearing	3.73 kg