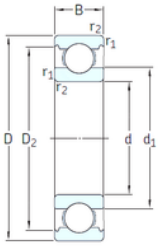




GBMA Bearing Manufacturing Co.,Ltd



VA201



2Z/VA201



2Z/VA208



2Z/VA228

6315/VA201 SKF High Temperature Insert Bearings

Bearing No. 6315/VA201

6315/VA201 Bearing 2D drawings and 3D CAD models

Size	75x160x37 mm
Bore Diameter	75 mm
Outer Diameter	160 mm
Width	37 mm
d	75 mm
D	160 mm
B	37 mm
C	37 mm
d1	101 mm
r1 min.	2,1 mm
r2 min.	2,1 mm
D2	139 mm
Weight	3,05 Kg
Temperature -	30 to +250 °
Basic static load rating (C0)	76,5 kN
Category	Single Row Ball Bearings
Inventory	0.0
Manufacturer Name	SKF
Minimum Buy Quantity	N/A
Weight / Kilogram	0
Product Group	B00308
Enclosure	Open
Precision Class	ABEC 1 ISO P0
Maximum Capacity / Filling Slot	No
Rolling Element	Ball Bearing



GBMA Bearing Manufacturing Co.,Ltd

Snap Ring	No
Internal Special Features	Polyalkylene Glycol/Graphite Mixture Filled
Cage Material	Steel
Internal Clearance	C0-Medium
Inch - Metric	Metric
Long Description	75MM Bore; 160MM Outside Diameter; 37MM Outer Race Width; Open; Ball Bearing; ABEC 1 ISO P0; No Filling Slot; No Snap Ring; Polyalkylene Glycol/Graphite Mixture Filled Internal Special Features; C0-
Other Features	Deep Groove Extreme Temperature Variant
Category	Single Row Ball Bearing
UNSPSC	31171504
Harmonized Tariff Code	8482.10.50.68
Noun	Bearing
Keyword String	Ball
Manufacturer URL	http://www.skf.com
Weight / LBS	3.05
Inner Race Width	0 Inch 0 Millimeter
Outer Race Width	1.457 Inch 37 Millimeter
Bore	2.953 Inch 75 Millimeter
Outside Diameter	6.299 Inch 160 Millimeter
d_1	101.4 mm
D_2	138.4 mm
$r_{1,2}$ min.	2.1 mm
d_a min.	87 mm
D_a max.	148 mm
r_a max.	2 mm
Basic dynamic load rating C	119 kN



GBMA Bearing Manufacturing Co.,Ltd

Basic static load rating C_0	76.5 kN
Limiting speed	70 r/min
Limiting temperature T max.	250 ° C
Mass bearing	3.06 kg