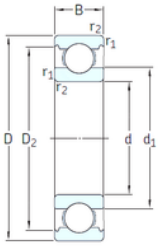




GBMA Bearing Manufacturing Co.,Ltd



VA201



2Z/VA201



2Z/VA208



2Z/VA228

6312/VA201 SKF High Temperature Insert Bearings

Bearing No. 6312/VA201

6312/VA201 Bearing 2D drawings and 3D CAD models

Size	60x130x31 mm
Bore Diameter	60 mm
Outer Diameter	130 mm
Width	31 mm
d	60 mm
D	130 mm
B	31 mm
C	31 mm
d1	81,8 mm
r1 min.	2,1 mm
r2 min.	2,1 mm
D2	113 mm
Weight	1,7 Kg
Temperature -	30 to +250 °
Basic static load rating (C0)	52 kN
Category	Single Row Ball Bearings
Inventory	0.0
Manufacturer Name	SKF
Minimum Buy Quantity	N/A
Weight / Kilogram	0
Product Group	B00308
Enclosure	Open
Precision Class	ABEC 1 ISO P0
Maximum Capacity / Filling Slot	No
Rolling Element	Ball Bearing



GBMA Bearing Manufacturing Co.,Ltd

Snap Ring	No
Internal Special Features	Polyalkylene Glycol/Graphite Mixture Filled
Cage Material	Steel
Internal Clearance	C0-Medium
Inch - Metric	Metric
Long Description	60MM Bore; 130MM Outside Diameter; 31MM Outer Race Width; Open; Ball Bearing; ABEC 1 ISO P0; No Filling Slot; No Snap Ring; Polyalkylene Glycol/Graphite Mixture Filled Internal Special Features; C0-
Other Features	Deep Groove Extreme Temperature Variant
Category	Single Row Ball Bearing
UNSPSC	31171504
Harmonized Tariff Code	8482.10.50.68
Noun	Bearing
Keyword String	Ball
Manufacturer URL	http://www.skf.com
Weight / LBS	1.7
Outside Diameter	5.118 Inch 130 Millimeter
Inner Race Width	0 Inch 0 Millimeter
Outer Race Width	1.22 Inch 31 Millimeter
Bore	2.362 Inch 60 Millimeter
d ₁	81.86 mm
D ₂	112.2 mm
r _{1,2} min.	2.1 mm
d _a min.	72 mm
D _a max.	118 mm
r _a max.	2 mm
Basic dynamic load rating C	85.2 kN



GBMA Bearing Manufacturing Co.,Ltd

Basic static load rating C_0	52 kN
Limiting speed	90 r/min
Limiting temperature T max.	250 ° C
Mass bearing	1.72 kg