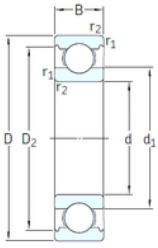




GBMA Bearing Manufacturing Co.,Ltd



VA201



2Z/VA201



2Z/VA208



2Z/VA228

6211-2Z/VA201 SKF High Temperature Insert Bearings

Bearing No. 6211-2Z/VA201

6211-2Z/VA201 Bearing 2D drawings and 3D CAD models

| | |
|---------------------------------|--------------------------|
| Size | 55x100x21 mm |
| Bore Diameter | 55 mm |
| Outer Diameter | 100 mm |
| Width | 21 mm |
| d | 55 mm |
| D | 100 mm |
| B | 21 mm |
| C | 21 mm |
| d1 | 69 mm |
| r1 min. | 1,5 mm |
| r2 min. | 1,5 mm |
| D2 | 89,4 mm |
| Weight | 0,61 Kg |
| Temperature - | 30 to +250 ° |
| Basic static load rating (C0) | 29 kN |
| Category | Single Row Ball Bearings |
| Inventory | 0.0 |
| Manufacturer Name | SKF |
| Minimum Buy Quantity | N/A |
| Weight / Kilogram | 0 |
| Product Group | B00308 |
| Enclosure | 2 Metal Shields |
| Precision Class | ABEC 1 ISO P0 |
| Maximum Capacity / Filling Slot | No |
| Rolling Element | Ball Bearing |



GBMA Bearing Manufacturing Co.,Ltd

| | |
|---------------------------|--|
| Snap Ring | No |
| Internal Special Features | Polyalkylene Glycol/Graphite Mixture Filled |
| Cage Material | Steel |
| Internal Clearance | C0-Medium |
| Inch - Metric | Metric |
| Long Description | 55MM Bore; 100MM Outside Diameter; 21MM Outer Race Width; 2 Metal Shields; Ball Bearing; ABEC 1 ISO P0; No Filling Slot; No Snap Ring; Polyalkylene Glycol/Graphite Mixture Filled Internal Special Fe |
| Other Features | Deep Groove Extreme Temperature Variant |
| Category | Single Row Ball Bearing |
| UNSPSC | 31171504 |
| Harmonized Tariff Code | 8482.10.50.68 |
| Noun | Bearing |
| Keyword String | Ball |
| Manufacturer URL | http://www.skf.com |
| Weight / LBS | 0.64 |
| Inner Race Width | 0 Inch 0 Millimeter |
| Outer Race Width | 0.827 Inch 21 Millimeter |
| Outside Diameter | 3.937 Inch 100 Millimeter |
| Bore | 2.165 Inch 55 Millimeter |
| d_1 | 69.06 mm |
| D_2 | 89.4 mm |
| $r_{1,2}$ min. | 1.5 mm |
| d_a min. | 64 mm |
| d_a max. | 69 mm |
| D_a max. | 91 mm |
| r_a max. | 1.5 mm |
| | |



GBMA Bearing Manufacturing Co.,Ltd

| | |
|---|----------|
| Basic dynamic load rating C | 46.2 kN |
| Basic static load rating C ₀ | 29 kN |
| Limiting speed | 50 r/min |
| Limiting temperature T max. | 250 ° C |
| Mass bearing | 0.64 kg |