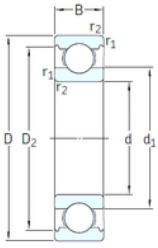




GBMA Bearing Manufacturing Co.,Ltd



VA201



2Z/VA201



2Z/VA208



2Z/VA228

6201-2Z/VA228 SKF High Temperature Insert Bearings

Bearing No. 6201-2Z/VA228

6201-2Z/VA228 Bearing 2D drawings and 3D CAD models

Size	12x32x10 mm
Bore Diameter	12 mm
Outer Diameter	32 mm
Width	10 mm
d	12 mm
D	32 mm
B	10 mm
C	10 mm
d1	18,4 mm
r1 min.	0,6 mm
r2 min.	0,6 mm
D2	27,4 mm
Weight	0,037 Kg
Temperature -	150 to +350 °
Basic static load rating (C0)	3,1 kN
Category	Single Row Ball Bearings
Inventory	0.0
Manufacturer Name	SKF
Minimum Buy Quantity	N/A
Weight / Kilogram	0.041
Product Group	B00308
Enclosure	2 Metal Shields
Precision Class	ABEC 1 ISO P0
Maximum Capacity / Filling Slot	No
Rolling Element	Ball Bearing



GBMA Bearing Manufacturing Co.,Ltd

Snap Ring	No
Internal Special Features	Coronet Cage
Cage Material	Graphite
Internal Clearance	C0-Medium
Inch - Metric	Metric
Long Description	12MM Bore; 32MM Outside Diameter; 10MM Outer Race Width; 2 Metal Shields; Ball Bearing; ABEC 1 ISO P0; No Filling Slot; No Snap Ring; Coronet Cage Internal Special Features; C0-Medium Internal Clear
Other Features	Deep Groove Extreme Temperature Variant
Category	Single Row Ball Bearing
UNSPSC	31171504
Harmonized Tariff Code	8482.10.50.68
Noun	Bearing
Keyword String	Ball
Manufacturer URL	http://www.skf.com
Manufacturer Item Number	6201-2Z/VA228
Weight / LBS	0.09
Outer Race Width	0.394 Inch 10 Millimeter
Inner Race Width	0 Inch 0 Millimeter
Outside Diameter	1.26 Inch 32 Millimeter
Bore	0.472 Inch 12 Millimeter
bore diameter:	12 mm
precision rating:	Not Rated
outside diameter:	32 mm
finish/coating:	Uncoated
overall width:	10 mm
cage material:	Graphite
bore type:	Round



GBMA Bearing Manufacturing Co.,Ltd

outer ring width:	10 mm
closure type:	Double Shielded
fillet radius:	0.6 mm
row type & fill slot:	Single Row Non-Fill Slot
maximum rpm:	400 RPM
internal clearance:	C0
series:	62
operating temperature range:	-240 to +660 ° F
resistance features:	Corrosion Resistant, Extreme Temperature
static load capacity:	3.1 kN
d_1	18.45 mm
D_2	27.34 mm
$r_{1,2}$ min.	0.6 mm
d_a min.	16.2 mm
d_a max.	18.4 mm
D_a max.	27.8 mm
r_a max.	0.6 mm
Basic dynamic load rating C	7.28 kN
Basic static load rating C_0	3.1 kN
Limiting speed	400 r/min
Limiting temperature T max.	350 ° C
Mass bearing	0.039 kg