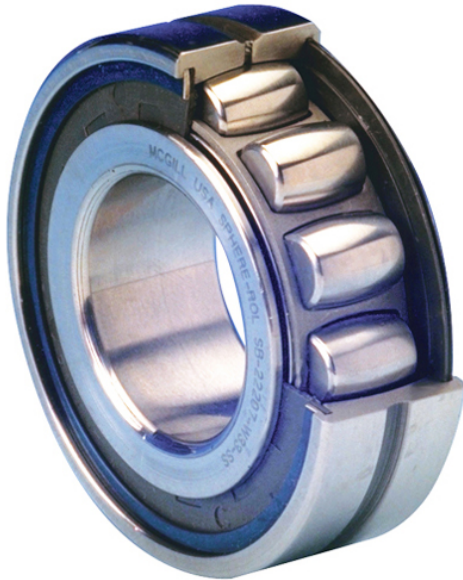




GBMA Bearing Manufacturing Co.,Ltd



SB22207-W33-S-DS Bearing 2D drawings and 3D CAD models

SB22207-W33-S-DS MCGILL Bearings Cam Follower Stud-Mount Cam Followers V-Groove Cam Followers

Bearing No. SB22207-W33-S-DS

d	35 mm
maximum rpm:	6800 RPM
D	72 mm
cage material:	Steel
B	23 mm
bearing material:	Chrome Steel
bore type:	Straight
precision rating:	Not Rated
outer ring type:	Not Split
finish/coating:	Uncoated
internal clearance:	C0
outer ring width:	23 mm
closure type:	Single Seal
fillet radius:	1 mm
lubrication hole type:	Lubrication Groove & Hole
series:	222
dynamic load capacity:	15100 lb
manufacturer upc number:	726166084943