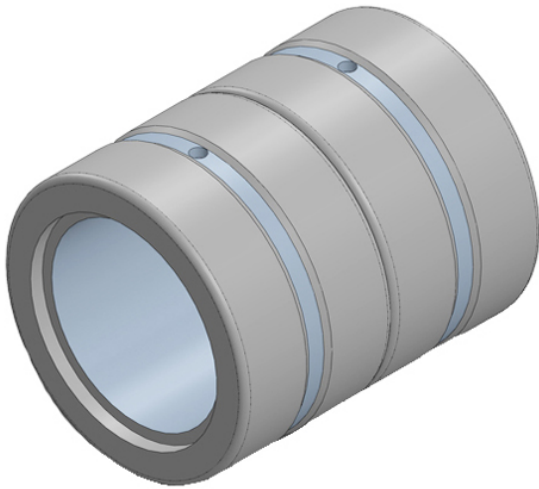




GBMA Bearing Manufacturing Co.,Ltd



MR 28 N DS Bearing 2D drawings and 3D CAD models

MR 28 N DS MCGILL Bearings Cam Follower Stud-Mount Cam Followers V-Groove Cam Followers

Bearing No. MR 28 N DS

d	1.7500 in
static load capacity:	18100 lbs
D	2.3125 in
maximum rpm:	6850 RPM
B	1.0000 in
fillet radius:	0.0600 in
needle bearing type:	Machined Bearing with No Inner Ring
flanges:	No Flange
closure type:	Open
series:	MR - Cagerol
number of rows:	1
lubrication hole type:	Lubrication Groove & Hole
bearing material:	Chrome Steel
precision rating:	Not Rated
operating temperature range:	-20F to 250 ° F
compatible inner ring:	MI 24 N
cage material:	Steel
standards met:	ABMA, ISO, MS 51961-27
dynamic load capacity:	18500 lbs
manufacturer catalog number:	5452862000