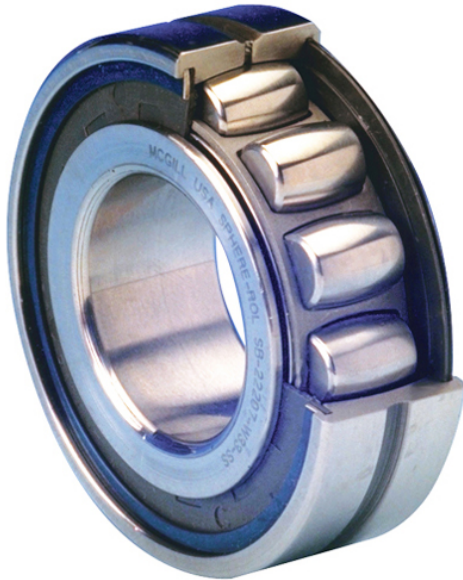




GBMA Bearing Manufacturing Co.,Ltd



SB 22205 C4 W33 TSS VA SB SERIES MH Bearing 2D drawings and 3D CAD models

SB 22205 C4 W33 TSS VA SB SERIES MH MCGILL Bearings Cam Follower Stud-Mount Cam Followers V-Groove Cam Followers

Bearing No. SB 22205 C4 W33 TSS VA SB SERIES MH

d	25 mm
maximum rpm:	9000 RPM
D	52 mm
operating temperature range:	Maximum of +450 ° F
B	18 mm
cage material:	Steel
bore type:	Straight
bearing material:	Chrome Steel
outer ring type:	Not Split
precision rating:	Not Rated
internal clearance:	C4
finish/coating:	Uncoated
closure type:	Double Sealed
outer ring width:	18 mm
lubrication hole type:	Lubrication Groove & Hole
fillet radius:	1 mm
dynamic load capacity:	8100 lb
series:	222